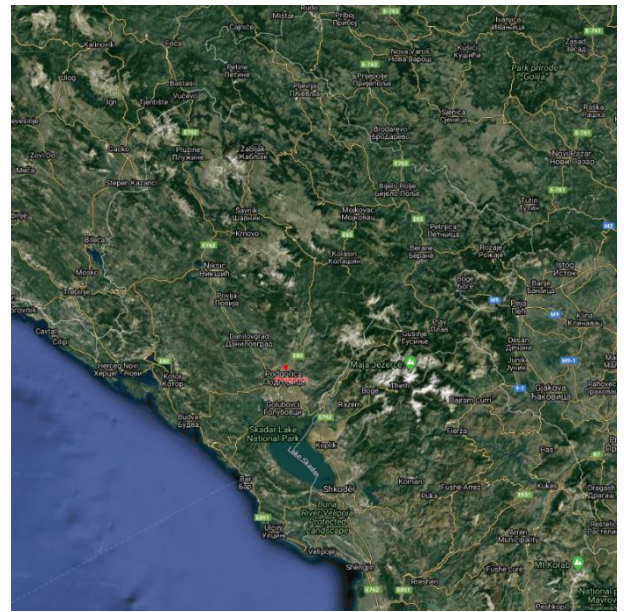
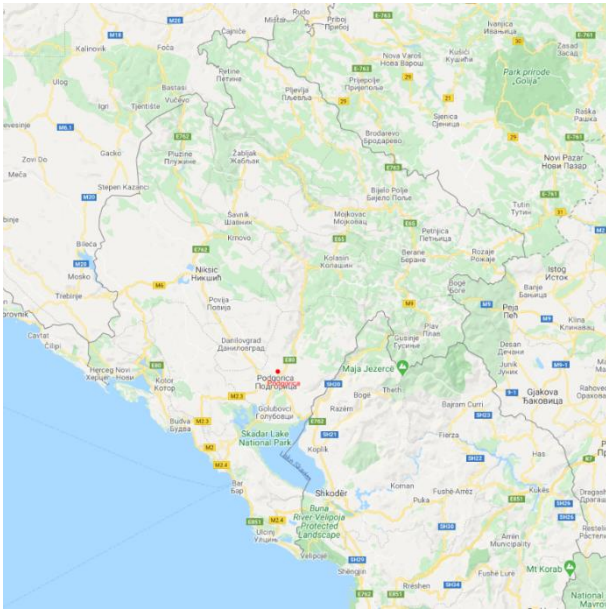


1. INTRODUCTION

The Montenegrin Populated Places are provided by Natural Earth. The data provides a spatial reference for the major towns and cities in Montenegro. The layer is useful for providing a reference to the distribution of the major towns and cities in Montenegro as well as the population in the cities and the surrounding areas.

If you have any questions relating to the information in this document, please contact Geoplan Support on +44 (0)1423 722719, or email support@geoplan.com. The Support Team is available Monday – Friday, 9.00am – 5.00pm GMT, excluding UK public holidays.

2. IMAGES



3. DATA

| Layer Name | Total Records |
|------------------|---------------|
| Populated Places | 1 |

Source – Natural Earth

Recency – 2020

Geographical Coverage and Accuracy – Montenegro

Projection – WGS84

Available Formats – Shapefile

Layer Type – Boundary

4. DATA HEALTH

| Data Health |
|-------------|
| Green |

- The most up to date populated place data from Natural Earth.

5. LICENSE INFORMATION

License type – Annual

Update cycle – Updated when required

6. FURTHER INFORMATION

Data Specification

| Header Record | Description | Example | Data Type | Maximum Field Size |
|---------------|---|------------|-----------|--------------------|
| PLACE_NAME | The name of the town/city | Podgorica | Integer | N/A |
| PLACE_ID | Unique Identifier | 1159149511 | Character | 15 |
| POP | The population of the town/city | 136473 | Integer | N/A |
| POP_MET | The population of the surrounding metropolitan area | 145850 | Integer | N/A |

*Please note the later cannot be used to import or search against.

Copyright

Copyright Information: GEOPLAN © Geoplan Spatial Intelligence Limited.