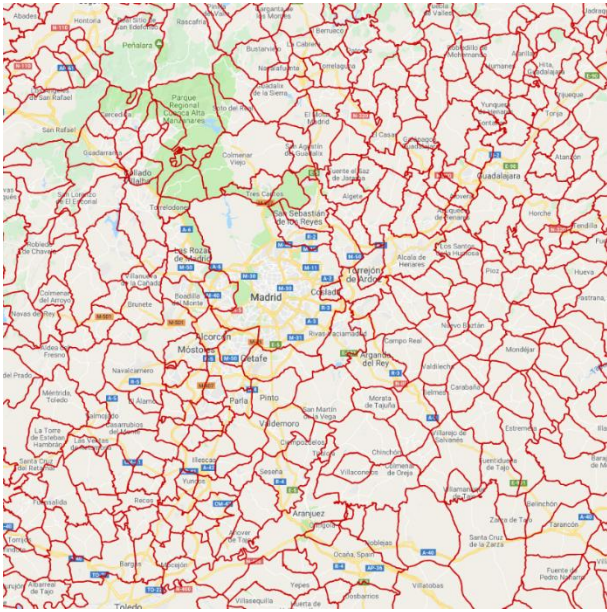


1. INTRODUCTION

The Spanish Municipalities are provided by Geoplan and The National Institute of Statistics (INE). The data provides a spatial reference for each of the Municipalities in Spain. The layer is useful for providing a reference to the different areas within Spain as well as for territory planning and hot spot mapping.

If you have any questions relating to the information in this document, please contact Geoplan Support on +44 (0)1423 722719, or email support@geoplan.com. The Support Team is available Monday – Friday, 9.00am – 5.00pm GMT, excluding UK public holidays.

2. IMAGES



3. DATA

Layer Name	Total Records
Municipalities	8116

Source – Geoplan, The National Institute of Statistics (INE)

Recency – 2011

Geographical Coverage and Accuracy – Spain (includes the Balearic & Canary Islands)

Projection – EPSG:4326. WGS84

Available Formats – Shapefile

Layer Type - Boundary

Attributes –

Attribute Name	Example
GEO_ID	1
MUNICIPALI*	Ababuj
ADMIN_ID	44001
POP_TOT	1000
POP_DENS	2.45
HHD_TOT	500
HHD_DENS	1.23

4. DATA HEALTH

Data Health

Green

- The municipality data is the most up to date definition at present.

5. LICENSE INFORMATION

License type- Annual

Update cycle- Updated when required

6. FURTHER INFORMATION

Data Specification

Header Record	Description	Data Type	Maximum Field Size
GEO_ID	Geoplan unique identifier	Integer	N/A
MUNICIPALI*	Municipality name	Character	50
ADMIN_ID	Municipality ID	Character	5
POP_TOT	Population total	Integer	N/A
POP_DENS	Population per km ²	Decimal	10 (2dp)
HHD_TOT	Households total	Integer	N/A
HHD_DENS	Households per km ²	Decimal	10 (2dp)

*Import Key Column

Content Information

Demographics

The Population and Household data has been sourced from The National Institute of Statistics (INE).

Copyright

Copyright Information: GEOPLAN © Geoplan Spatial Intelligence Limited.