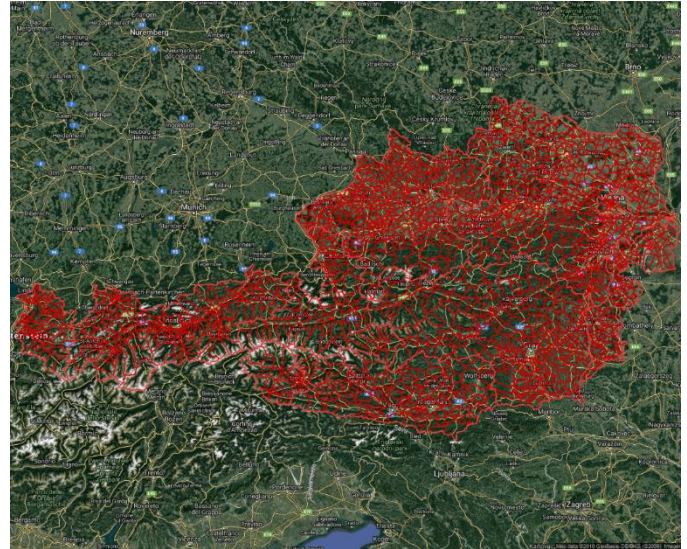
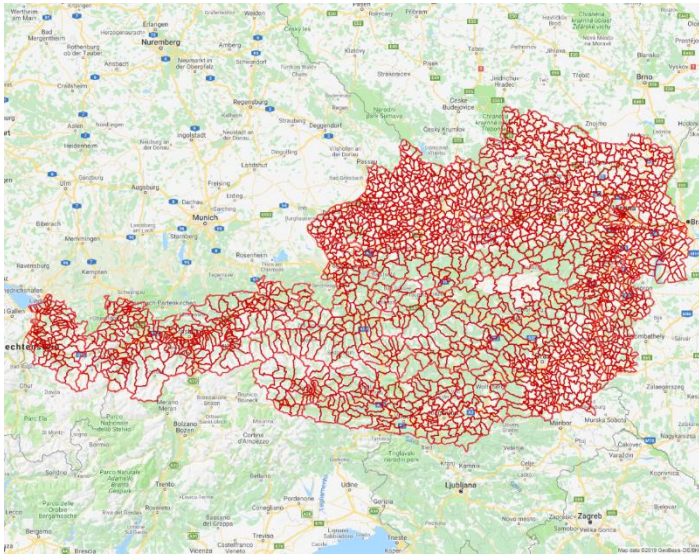


1. INTRODUCTION

The Austrian Municipality Boundaries are provided by Statistics Austria. The data provides a spatial reference for each of the Municipalities in Austria. The layer is useful for providing a reference to the different areas within Austria as well as territory planning and hot spot mapping.

If you have any questions relating to the information in this document, please contact Geoplan Support on +44 (0)1423 722719, or email support@geoplan.com. The Support Team is available Monday – Friday, 9.00am – 5.00pm GMT, excluding UK public holidays.

2. IMAGES



3. DATA

Layer Name	Total Records
Municipalities	2,118

Source – Statistics Austria

Recency – 2019

Geographical Coverage and Accuracy – Austria

Projection – EPSG:4326. WGS84

Available Formats – Shapefile

Layer Type – Boundary

Attributes –

Attribute Name	Example
GEO_ID	1
MUNICIPALI*	Schäffern
ADMIN_ID	62247
POP_TOT	1373
POP_DENS	95.61

* Municipality automatically shortened to 10 characters due to restrictions with the Shapefile format

4. DATA HEALTH

Data Health	Green
--------------------	--------------

- The most up to day Municipality boundaries for Austria

5. LICENSE INFORMATION

License type– Annual

Update cycle– Updated when required

6. FURTHER INFORMATION

Data Specification

Header Record	Description	Data Type	Maximum Field Size
GEO_ID	Geoplan unique identifier	Integer	N/A
MUNICIPAL**	Municipality name	Character	50
ADMIN_ID*	Municipality id	Character	20
POP_TOT	Population total	Integer	N/A
POP_DENS	Population per km ²	Decimal	6 (2dp)

* Import Key Column

** Municipality automatically shortened to 10 characters due to restrictions with the Shapefile format

Content Information

The demographic data has been sourced from Statistics Austria and was last updated in 2019.

Copyright

Copyright Information: GEOPLAN © Geoplan Spatial Intelligence Limited.